

Country report

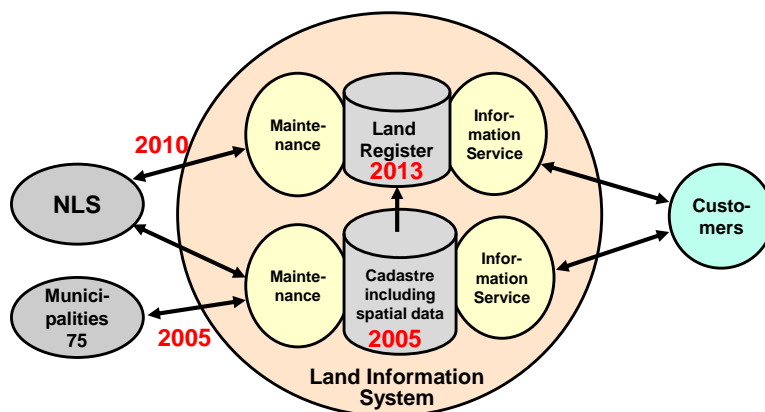
News from the Cadastre in Finland

Ari Tella
24.10.2016

FIG Commission 7 Annual Meeting, Coimbra Portugal



The Land Information System



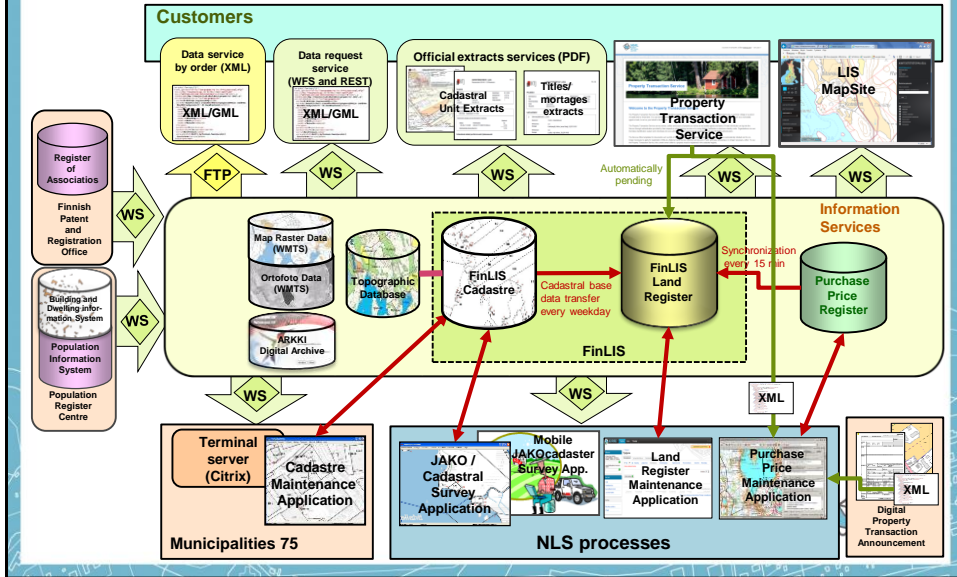
Totally digitized processes in cadastre maintenance and information services



Finnish Land Information System (FinLIS)

Data Infrastructure, Integrations, Information Services

WS Web Services



Strategic key development areas

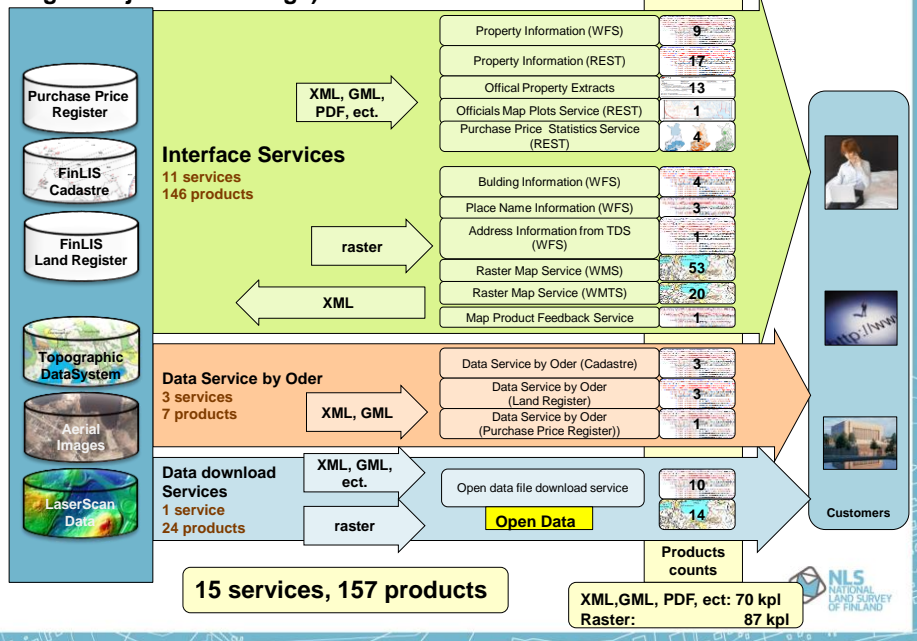
- eServices
 - Bidirectional eServices project
 - Increasing the use of the Property Transaction Service
- Effective use of spatial data
- Cadastre
 - Development of existing cadastre
 - A new cadastral system, Cadastre 2035
- Computerised register of apartments
 - New register for condominiums

eServices

- Two-way services
- Electronic Property Transaction



NLS Digital Web Service (chargeable ja free of charge)



What can you do with the NLS Two-way services ? ⁷

Future

Maanmittauslaitoksen palveluportaali

På svenska | Samegiella | In English
Kirjautunut: Jukka Mallila

Kaikki kiinteistösi Toimenpidearkisto

Uusi toimenpidepyyntö

Anna valtuutus Tee kiinteistökauppa

Kiinteistösi

kiinteistön nimi tai tunnus Hae

Nimi	Kunta	Tunnus
Sotopäriä	Oulu	643-433-87-8
A Kuutamola	Oulu	645-443-32-8
Mallila	Oulu	632-421-43-5
B Ylä-Manneriä	Lahti	798-576-32-5
C Mäkelä	Muhos	494-402-19-41

<< < 1 > >>

Vireilläolevat toimenpiteet

- Lohkominen, 2014-426340
Mäkelä 494-402-19-41, Oulu
- Vesijätömaan lunastus, 2014-687940
Kuutamola 645-443-32-8, Oulu
- Tilusjärjestely, 2011-897546
Sotopäriä 643-433-87-8, Oulu



What can you do with the NLS Two-way services ?

Future

Maanmittauslaitoksen palveluportaali

På svenska | Samegiella | In English
Kirjautunut: Jukka Mallila

Kaikki kiinteistösi Toimenpidearkisto

Uusi toimenpidepyyntö

Anna valtuutus Tee kiinteistökauppa

Kiinteistösi

- Check all the basic information of your own real properties
- Activate cadastral and legal survey operations
- Take part on legal surveys and cadastral operations via web
- See all the current activities going on
- Download free: topomaps, historical maps, aerial & laser scanned data
- Order NLS products like registry certificates, printed maps, ..



Connection to national Service Architecture gateway

Omat tietoni

Henkilötietoni

Kumpulainen, Paulina Johanna
010180-8358

Kotikunta: VHS
Puoliso: Kumpulainen, Matti Johannes,
120978-959
Lapsi: Kumpulainen, Onni Mattias,
310813A59H

Katso kaikki tiedot

Kiinteistöni

Kiinteistön tunnus: 123-456-78-90
Kunta: VHS
Omistusmuoto: Omistaja
Omistusosuus: 10

Lähde: Maanmittauslaitoksen kiinteistörekisteri

Ajoneuvoni

Olet seuraavan ajoneuvon haltija:

Ajoneuvo: HHT-323
Nissan Micra
VM, 2006

Omistaja: Kumpulainen, Matti Johannes

Ajoneuvovero

Muistutukset ja viestit

Muistutukseni ja viestini

19.11.2014 Ajoneuvovero erääntyy 3.12. Lue lisää

18.10.2014 Kysymys koteloituksesta ja kunnasta kiinteistöasiassa Lue lisää

11.10.2014 Muistutus, että seuraavan muistutuskunnon ajoneuvo on 11.11.2014. Lue lisää

Viimeksi käytetyt palvelut

Katso kaikki
Käytössä
Tuo lisää ajoneuvoja
Käytössä

Näytä kaikki tiedot

Lähde: Ajoneuvorekisteri, ajoneuvovero

NLS
NATIONAL
LAND SURVEY
OF FINLAND

Electronic Property Transaction System in Finland

Now

In brief

- Web-based application which enables electronic transactions related to real estate conveyance
- One ICT-service which includes both real estate transaction and mortgage management systems
- Service was launched in November 2013
- Service provided by National Land Survey of Finland

Electronic Property Transaction System in Finland

Now

Barriers to implementation

- Use is not required in legislation
 - "Paper process" can still be used (attesting notaries & applications of mortgages)
- Real estate brokers are still required to archive paper forms
- Loan related papers are stored in vaults
- ~ 3.5 million paper mortgage deeds

Next developments

- Agreements with banks have been made to boost the use
- Applications of mortgages allowed only digitally in 2017

Future



Effective use of spatial data

- New Topographical Data System in cooperation with municipalities



Cadastral

- Development of existing cadastral
 - A new cadastral system



Development of existing cadastral

- 3D properties, 2017
- Scanning of all microfilms, 2017-2019
- Pilot of customer process using LEAN: connecting property transaction, title registration and survey proceedings, 2017
- Replace survey map about printout from the cadastral map
- ...



A new cadastral system

- Research project Catastre2035, 2018
- Research into coordinate based cadastre

Future Cadastre

- Accurate, Coordinate-based, Digitised
- Ubiquitous; incl. all easements, right of ways etc.
- Integrated
- 3–4 dimensioned
- Crowdsourcing, internet of things – smart cities
- Building Information Modelling BIM
- Utility Mapping – digital underground visualisations
- Open Access – balanced with individual privacy



Computerised register of apartments

- New register for condominiums



Real property / apartments in Finland

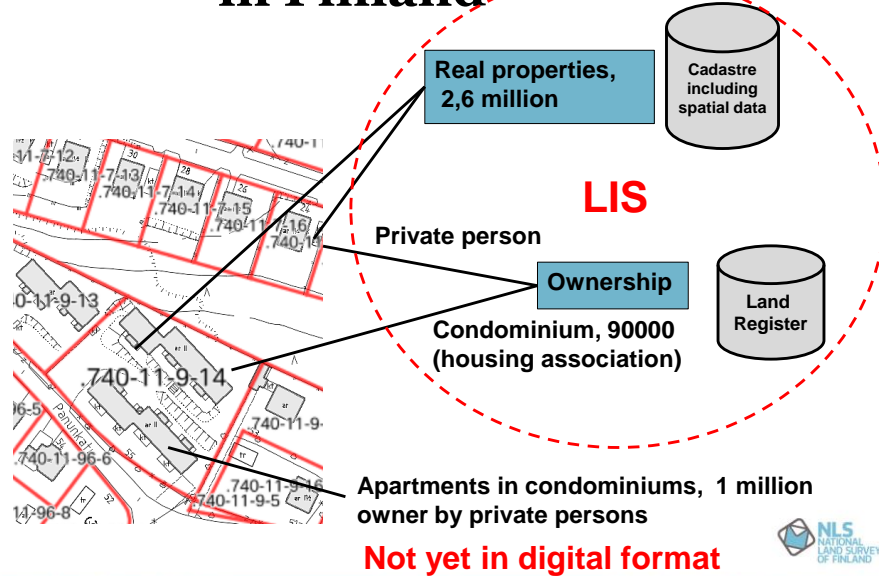
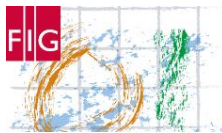


FIG WORKING WEEK 2017



Surveying the world of tomorrow – From digitalisation to augmented reality
May 29 - June 2 Helsinki Finland

FIG Working Week 2017 in Helsinki 29.5.-2.6.2017



Theme:

Surveying the World of Tomorrow – From Digitalisation to Augmented Reality

- 15 November 2016 - Deadline for authors to submit non peer reviewed abstracts
- The registration will open October 2016



FIG **FIG WORKING WEEK 2017**
Surveying the world of tomorrow –
From digitalisation to augmented reality
May 29 - June 2 **Helsinki Finland**



Tervetuloa!
Welcome!

